

# Vitmaster

» A single skin high quality vitreous enamel  
**Flue Pipe System**



» VITMASTER

# Vitmaster

» A single skin high quality vitreous enamel Flue Pipe system for gas, oil and solid fuels

## » Product Features

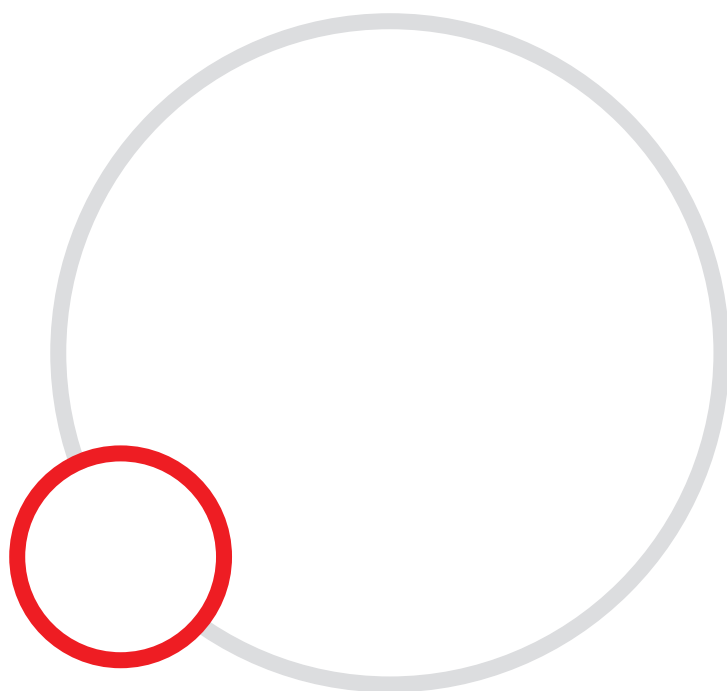
- » A single skin, high quality vitreous enamel flue pipe system.
- » Made from two coats of internally and externally coated vitreous enamelled low carbon steel.
- » For use as flue pipe connection for domestic and commercial heating appliances.
- » To enable the removal of an appliance without the need to disturb the flue, an adjustable length, long tail adaptor or top hat adaptor can be used.
- » Suitable for oil, gas and all solid fuels.
- » Finished steel has an internal and external vitreous enamel coating which meets resistance requirements for heat and acid.
- » Available as straight pipe lengths with fittings and accessories.
- » Available in five diameters.
- » Low installation costs.
- » Easily and rapidly assembled.
- » Unsuitable for condensing appliances.

## » Approvals & Authority

- » Docherty VF complies with the following requirements:  
Building regulation requirements Section J.  
British Standard - BS6461 Part 1, BSEN 1856-2: 2009, BSEN 1443: 2003 "Chimneys and flues for domestic appliances burning solid fuel (including wood and peat)".  
Scottish Development Department's Building Regulations Class Relaxation Directive No. 61 dated May 1982.

## » Technical Information

- » The vitreous enamel coating meets with the following standards:  
High temperature resistance requirement BS1344 Parts 1 and 7.  
Acid resistance Class SA requirement of BS1344 Part 3.
- » 4" to 8" diameters are manufactured from rolled and welded 18 gauge 1.2mm thick low carbon mild steel sheet to BS1449 Part 1.
- » A maximum connecting length of 1.8 metres is recommended when connecting an appliance to a chimney/flue system.
- » A 600mm length off the appliance is required before altering the direction of the flue gases for gas appliances. A 600mm length is also recommended when installing solid fuel appliances.
- » No angle greater than 45 degrees from the vertical should be used when fitting bends on a solid fuel application.
- » Clearance required from vitreous pipe to combustibles is equivalent to three times the diameter of the vitreous pipe.

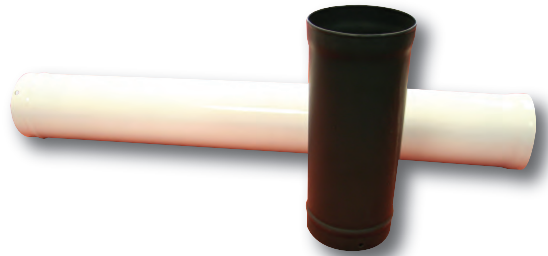
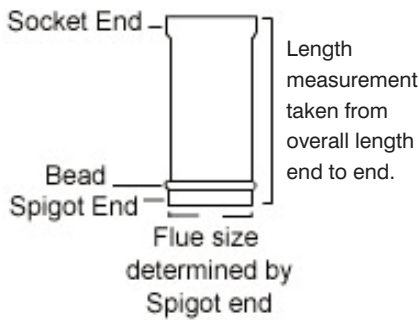


## » Straight Lengths and Codes

### » Straight Lengths

Fixed straight lengths are available in four nominal metric sizes: 300mm (1ft), 600mm (2ft), 900mm (3ft), and 1200mm (4ft). Actual installed length allowing for spigot and socket connection is approximately 30mm (1<sup>1</sup>/<sub>4</sub>in) less.

All straight lengths are also available with a stainless steel cleaning access door located in the centre and complete with a ceramic fibre gasket and dome nuts.



Size internal diameter	Nominal Internal socket diameter
100mm (4in)	105mm
125mm (5in)	130mm
150mm (6in)	155mm
175mm (7in)	180mm
200mm (8in)	205mm

### » 900mm (3ft) Lengths

Size	White with door	no door
100mm	W0604	W0504
125mm	W0605	W0505
150mm	W0606	W0506
175mm	W0607	W0507
200mm	W0608	W0508

### Straight Lengths Options and Codes

#### » 300mm (1ft) Lengths

Size	White with door	no door
100mm	W0204	W0104
125mm	W0205	W0105
150mm	W0206	W0106
175mm	W0207	W0107
200mm	W0208	W0108

#### » 1200mm (4ft) Lengths

Size	White with door	no door
100mm	W0804	W0704
125mm	W0805	W0705
150mm	W0806	W0706
175mm	W0807	W0707
200mm	W0808	W0708

#### » 600mm (2ft) Lengths

Size	White with door	no door
100mm	W0404	W0304
125mm	W0405	W0305
150mm	W0406	W0306
175mm	W0407	W0307
200mm	W0408	W0308

#### » Two piece adjustable between 310mm to 500mm maximum

Size	White
100mm	W2904
125mm	W2905
150mm	W2906
175mm	W2907
200mm	W2908

### » Ordering codes prefix:

White add: **W** Gloss black add: **B** Matt black add: **M** Ivory add: **I** Blue black add: **G**

## » Elbow Options and Codes

### » Elbows

Designed to angle the flue pipe run where necessary and available in 165°, 150°, 135°, 110° and 90° versions.

All elbows are also available with a stainless-steel cleaning access door with a ceramic fibre gasket, to cover an 80mm x 110mm (3in x 5in) opening. Also available without access doors. Please see Elbow Dimensions.

### » 165° Elbow

Available in Matt black only.

Size	Matt Black with door	no door
125mm	M3105	M1705
150mm	M1306	M1706



### » 150° Elbow

Size	White with door	no door
100mm	W2804	W2704
125mm	W2805	W2705
150mm	W2806	W2706
175mm	W2807	W2707
200mm	W2808	W2708



### » 135° Elbow

Size	White with door	no door
100mm	W1004	W0904
125mm	W1005	W0905
150mm	W1006	W0906
175mm	W1007	W0907
200mm	W1008	W0908



### » 110° Elbow

Size	White with door	no door
100mm	W1204	W1104
125mm	W1205	W1105
150mm	W1206	W1106
175mm	W1207	W1107
200mm	W1208	W1108



### » 90° Elbow

Size	White with door	no door
100mm	W1304	W2604
125mm	W1305	W2605
150mm	W1306	W2606
175mm	W1307	W2607
200mm	W1308	W2608

## » Elbows and Tees Offset Charts

### » 165° Offset Chart

Chimney Length	125mm (5")		150mm (6")	
	Offset	Height	Offset	Height
None	71	541	72	422
300mm	142	806	143	812
600mm	221	1101	222	1107
900mm	300	1395	301	1401
1200mm	379	1690	380	1696

### » 150° Offset Chart

Chimney Length	125mm (5")		150mm (6")		175mm (7")		200mm (8")	
	Offset	Height	Offset	Height	Offset	Height	Offset	Height
None	131	487	138	513	135	502	142	528
300mm	268	725	275	751	272	740	279	766
600mm	421	989	428	1015	425	1004	432	1030
900mm	573	1253	580	1280	577	1268	584	1295
1200mm	726	1518	733	1544	730	1533	737	1559

### » 135° Offset Chart

Chimney Length	100mm (4")		125mm (5")		150mm (6")		175mm (7")		200mm (8")	
	Offset	Height	Offset	Height	Offset	Height	Offset	Height	Offset	Height
None	186	449	211	510	221	534	233	562	243	586
300mm	380	643	406	705	416	729	427	756	437	780
600mm	596	859	622	921	631	944	643	972	653	996
900mm	812	1075	837	1136	847	1160	858	1187	868	1211
1200mm	1027	1290	1053	1352	1063	1376	1074	1403	1084	1427

### » 110° Offset Chart

Chimney Length	100mm (4")		125mm (5")		150mm (6")		175mm (7")		200mm (8")	
	Offset	Height	Offset	Height	Offset	Height	Offset	Height	Offset	Height
None	258	369	258	369	264	377	305	436	335	479
300mm	517	463	517	463	522	471	564	530	594	573
600mm	803	567	803	567	809	575	850	635	880	677
900mm	1090	672	1090	672	1096	680	1137	739	1167	782
1200mm	1377	776	1377	776	1382	784	1424	843	1454	886

### » 90° Offset Chart

Chimney Length	100mm (4")		125mm (5")		150mm (6")		175mm (7")		200mm (8")	
	Offset	Height	Offset	Height	Offset	Height	Offset	Height	Offset	Height
None	265	265	325	325	325	325	355	355	421	421
300mm	540	265	600	325	600	325	630	355	696	421
600mm	845	265	905	325	905	325	935	355	1001	421
900mm	1150	265	1210	325	1210	325	1240	355	1306	421
1200mm	1455	265	1515	325	1515	325	1545	355	1611	421

### » Offset Dimensions

All measurements relate to dimensions on centre line of components.

## » Tees Options and Codes



### » 135° Tee (complete with cap)

Provides a 45° connection to an appliance with cleaning access if required through the base opening, the latter being closed with a Tee Cap.

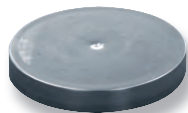
Size	White
100mm	W1404
125mm	W1405
150mm	W1406
175mm	W1407
200mm	W1408



### » 90° Tee (complete with cap)

Provides a horizontal connection to an appliance with cleaning access if required through the base opening, the latter being closed with a Tee Cap. Available in all diameters each having a 75mm (3in) long branch for application.

Size	White
100mm	W1504
125mm	W1505
150mm	W1506
175mm	W1507
200mm	W1508



### » Tee Cap (stainless steel)

Used to close the branch of tees. Manufactured in stainless steel.

Size	Code
100mm	62004
125mm	62005
150mm	62006
175mm	62007
200mm	62008



### » Tee Cap Clip (stainless steel)

Used to secure the stainless Tee Cap into position and allows easier removal with the use of Toggle Clip Fixing (available separately).

Size	Code
100mm	61804
125mm	61805
150mm	61806
175mm	61807
200mm	61808



### » Jointing

All lengths and fittings are designed to be installed with the female coupling (the socket) uppermost. The lower male end is firmly pushed into place and must be adequately sealed with a little fire cement.

Size	Code
2lb	FC2
4lb	FC4
6lb	FC6
Tobe	FCT

### » Insulfrax

High temperature filler mastic, fibrous base will not crack.

Size	Code
300gram	SIL300B (black)
300gram	SIL300W (white)

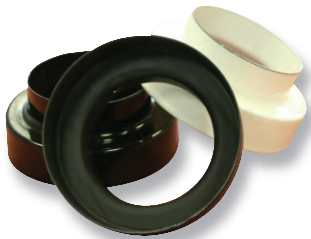
## » Accessories



### » Straight Length Increasing Adaptor

Designed to enable five diameters of Docherty VF to be stepped up one diameter over a tapered length.

Size from	Size to	White
100mm	125mm	W1604
125mm	150mm	W1605
150mm	175mm	W1606
175mm	200mm	W1607



### » Increasing Adaptor (stepped)

Designed to enable four diameters of Docherty VF to be stepped up one diameter as appropriate.

Size from	Size to	White
100mm	125mm	W2104
125mm	150mm	W2105
150mm	175mm	W2106
175mm	200mm	W2107



### » Cut Length Adaptor

Used to join any two sections of previously cut Docherty VF, or material of similar diameter.

Size	White
100mm	W1904
125mm	W1905
150mm	W1906
175mm	W1907
200mm	W1908



### » Ceiling Trim Plate

Available in White, Gloss black and Matt black.

Size	Code
100mm	M2204
125mm	M2205
150mm	M2206
175mm	M2207
200mm	M2208

### » 45° Elliptical Trim Plate

Available in Matt black only.

Size	Code
100mm	M2204EL
125mm	M2205EL
150mm	M2206EL
175mm	M2207EL
200mm	M2208EL

### » Ordering codes prefix:

White add: **W** Gloss black add: **B** Matt black add: **M** Ivory add: **I** Blue black add: **G**

## » Accessories



### » Adaptor to Flexible (stainless steel)

Used to connect Docherty VF to Flexmaster Liner. Manufactured from stainless steel.

Size from	Size to	White
100mm	110mm	62304
125mm	130mm	62305
150mm	160mm	62306
175mm	185mm	62307
200mm	210mm	62308



### » Wall Band (galvanised finish)

Adjustable bracket (50mm - 250mm) used to provide lateral stability. Made from galvanised steel.

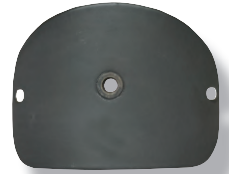
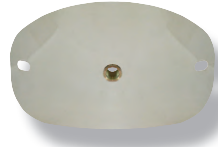
Size	Code
100mm	62504
125mm	62505
150mm	62506
175mm	62507
200mm	62508



### » Telescopic Vitreous Mounting Bracket

Wall band powder coated.

Size	Code
100mm	62504T
125mm	62505T
150mm	62506T
175mm	62507T
200mm	62508T



### » Door Hatch with Test Point

Available in stainless steel or Matt black.

Description	Code
Access door with test point	VE00103P

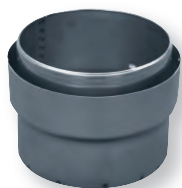


### » Flue Pipe with Test Point

Vitreous pipe with test point.

Size	Code
50 x 100 mm	M0304P
50 x 125 mm	M0305P
50 x 150 mm	M0306P
50 x 175 mm	M0307P
50 x 200 mm	M0308P

## » Adaptors



### » Multifuel Adaptor

Size	Standard Flue Adaptors	Standard Increasing Adaptors
100mm	FA16004	
100 – 125mm		IA17005
100 – 150mm		IA17046
125mm	FA16005	
125 – 150mm		IA17006
125 – 175mm		IA17057
150mm	FA16006	
150 – 175mm		IA17007
150 – 200mm		IA17068
175mm	FA16007	
175 – 200mm		IA17008
200mm	FA16008	
200 – 225mm		IA17009
225mm	FA16009	
225 – 250mm		IA17010
250mm	FA16010	
250 – 300mm		IA17012
300mm	FA16012	
300 – 350mm		IA17014
350mm	FA16014	

### » Clip Fit Adaptors

Clip fit with three spring clips.

Size	Clip Fit Adaptor Code	Clip Fit Increasing Adaptor Code
125mm	FA16015	
150mm	FA16016	
125 – 150mm		IA17016
125mm	FA16017	
200mm	FA16018	

### » Clip Fit Top Hat Adaptors

Size	Clip Fit Top Hat Adaptor Code	Clip Fit Top Hat Increasing Adaptor Code
125mm	PA17015	
150mm	PA17016	
125 – 150mm		PA17156

### » Long Tail Adaptor

Size	Long Tail Adaptor Code	Long Tail Increasing Adaptor Code
125mm	FA17505V	
150mm	FA17506V	
125 – 150mm		IA17105V

### » Long Tail Clip Fit Adaptors

Size	Long Tail Clip Fit Adaptor Code	Long Tail Clip Fit Increasing Adaptor Code
125mm	FA17515	
150mm	FA17516	
125 – 150mm		FA17556

### » 150° Angled Long Tail Adaptor with Clips and Flange

Size	150° Angled Long Tail Adaptor Code	150° Angled Long Tail Increasing Adaptor Code
125mm	FA15015	
150mm	FA15016	
125 – 150mm		FA15156

## » Adaptors

### » Top Hat Adaptors

Size	Top Hat Adaptor Code	Top Hat Increasing Adaptor Code
125mm	PA17005	
150mm	PA17006	
125 – 150mm		PA17056
175mm	PA17007	

### » Register Adaptor to suit Prima

Size	Register Adaptor Prima Code	Register Increasing Adaptor Prima Code
125mm	RPPA05	
150mm	RPPA06	
125 – 150mm		RPVA056

### » Register Adaptor to suit Vitreous Flue

Size	Register Adaptor Code	Increasing Register Adaptor Code
125mm		
300 x 300 x 300mm	RPVA05	
150mm		
300 x 300 x 300mm	RPVA06	
125 – 150mm		RPVA056
175mm	RPVA07	
200mm	RPVA08	

## » Trim Collars

### » Debris Plate

This product is available in a range of sizes and styles, it can come with a hole in the centre or offset by 80mm. Other sizes are available on request.

Size	Code
1000 x 500mm no hole	CP10050
1000 x 500mm 5.25" hole offset by 80mm	CP10055
1000 x 500mm 6.25" hole offset by 80mm	CP10056
125mm Debris plate with 123mm clamp (gas only)	0164125
Debris Plate Mounting Kit Comprises of 3 x 1m x 38 x 38 x 38mm angle lengths	DPKIT001

### » Debris Plate Collar

Size	Code
100mm	SB41004
125mm	SB41005
150mm	SB41006
175mm	SB41007
200mm	SB41008

### » Draught Stabiliser

Available in Matt black only.

Size	Code
100mm	DSB3404
125mm	DSB3405
150mm	DSB3406
175mm	DSB3407
200mm	DSB3408



»» Technical Advice Helpline  
**0845 603 1715**



**CHESSINGTON:**

Unit D, Roebuck Road,  
Chessington Industrial Estate  
Chessington, Surrey KT9 1EU  
Tel: 020 8391 0093  
Fax: 020 8397 7687

**LEEDS:**

Unit 5, Ashley Industrial Estate  
Elmfield Road, Morley,  
Leeds LS27 0EL  
Tel: 01132 381200  
Fax: 01132 381044

**NOTTINGHAM:**

Unit 15, Robin Hood Street Industrial Estate  
Off Alfred Street South,  
Nottingham NG3 1GE  
Tel: 01159 584734  
Fax: 01159 502899

**HONITON:**

Independent Components Ltd  
Unit 20, Flightway Business Park,  
Dunkeswell, Devon EX14 4RD  
Tel: 01404 890098  
Fax: 01404 891112

»» VITMASTER

**docherty**  
CHIMNEY GROUP

**Central Distribution Centre**

Head Office • Accounts • Production  
Unit 15 & 16 Colthrop Business Park  
Colthrop Lane, Thatcham, Berkshire RG19 4NB  
Tel: 01635 292400 • Fax: 01635 201737  
Email: [info@docherty.co.uk](mailto:info@docherty.co.uk)

[www.docherty.co.uk](http://www.docherty.co.uk)